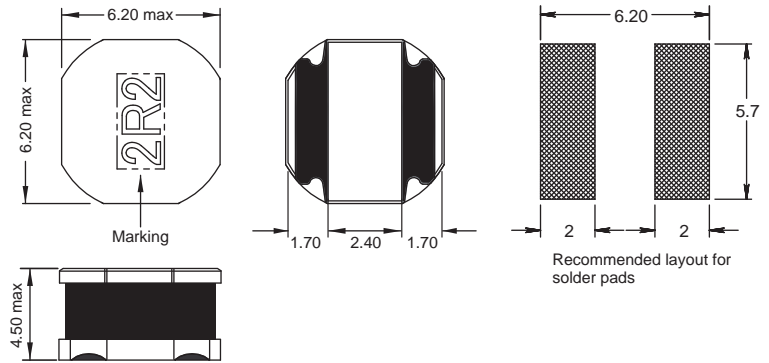
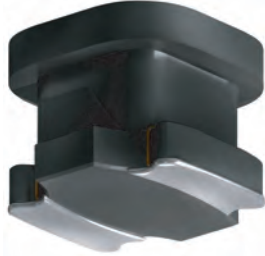


242418 FPS

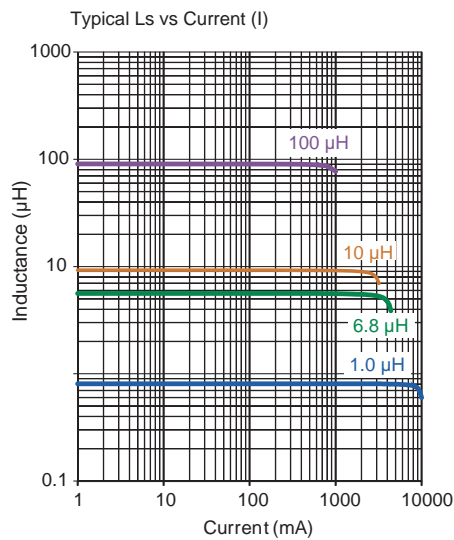
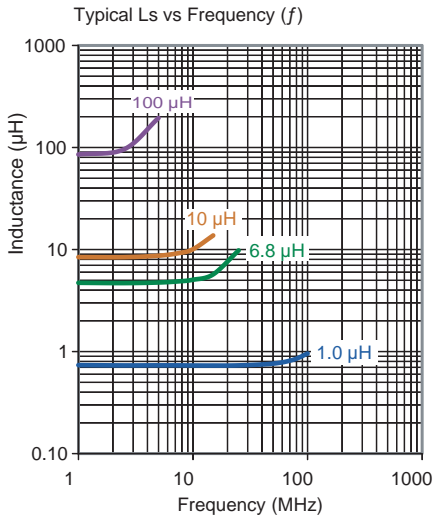


Semi-shielded

Engineer's Kit: EK-242418FPS-X



Chip Inductors for Power Applications



Part No	Inductance L (µH)	f _L (kHz)	Tol ± (%)	DCR max (mΩ)	Rated DC Current I _{sat} (A)	I _{rms} (A)
242418FPS-1R0N-01	1.0	100 @ 1 V	30	13	8.6	6.5
242418FPS-1R3N-01	1.3	100 @ 1 V	30	14	8.0	6.0
242418FPS-1R8N-01	1.8	100 @ 1 V	30	16	7.0	5.3
242418FPS-2R2N-01	2.2	100 @ 1 V	30	17	6.1	5.0
242418FPS-3R0N-01	3.0	100 @ 1 V	30	22	5.0	4.8
242418FPS-3R3N-01	3.3	100 @ 1 V	30	22	4.5	4.5
242418FPS-4R5N-01	4.5	100 @ 1 V	30	30	4.3	3.8
242418FPS-4R7N-01	4.7	100 @ 1 V	30	30	4.0	3.7
242418FPS-5R6N-01	5.6	100 @ 1 V	30	34	3.8	3.6
242418FPS-6R3N-01	6.3	100 @ 1 V	30	39	3.8	3.6
242418FPS-6R8N-01	6.8	100 @ 1 V	30	44	3.6	3.5
* 242418FPS-8R2N-01	8.2	100 @ 1 V	30	53.3	3.2	3.1
* 242418FPS-100M-01	10	100 @ 1 V	20	54	3.1	3.0
* 242418FPS-150M-01	15	100 @ 1 V	20	96	2.3	2.3
* 242418FPS-220M-01	22	100 @ 1 V	20	134	1.9	1.9
* 242418FPS-330M-01	33	100 @ 1 V	20	204	1.5	1.5
* 242418FPS-470M-01	47	100 @ 1 V	20	252	1.3	1.3
* 242418FPS-560M-01	56	100 @ 1 V	20	324	1.2	1.2
* 242418FPS-680M-01	68	100 @ 1 V	20	390	1.0	1.0
* 242418FPS-101M-01	100	100 @ 1 V	20	552	0.9	0.9
* 242418FPS-151M-01	150	100 @ 1 V	20	810	0.85	1.0
* 242418FPS-221M-01	220	100 @ 1 V	20	1104	0.55	0.5
* 242418FPS-102M-01	1000	100 @ 1 V	20	6218	0.25	0.25

Core Material: Ferrite

Revision date: 04 Jul 2023

SPQ: Taped / Reel 1000 [-01]

Remarks:

* : The total length and width of component including epoxy is 6.8mm max.