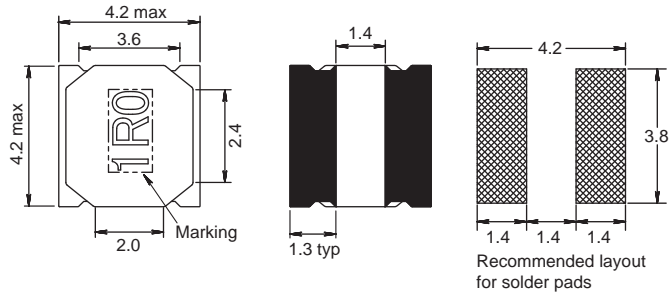
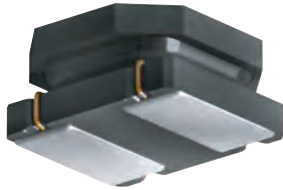


1616 FPS



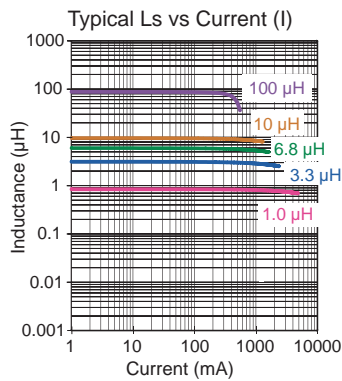
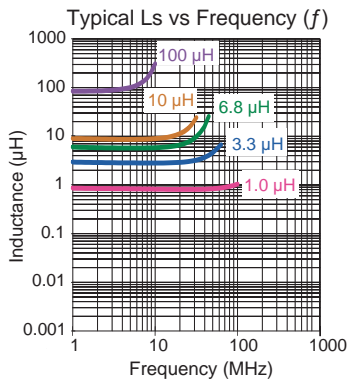
Semi-shielded

Engineer's Kit: EK-1616FPS-X



L (μH)	H max
0.47 - 6.8	1.88
10 - 220	1.80

Chip Inductors for Power Applications



Part No	Inductance	f _L	Tol	DCR	Rated DC Current	
	L (μH)					
	L (μH)	(kHz)	± (%)	(mΩ)	(A)	(A)
1616FPS-R47N-01	0.47	100 @ 1 V	30	41.6	3.50	4.00
1616FPS-R82N-01	0.82	100 @ 1 V	30	20.8	4.20	4.00
1616FPS-1R0N-01	1.0	100 @ 1 V	30	24.7	4.70	3.70
1616FPS-1R2N-01	1.2	100 @ 1 V	30	27.3	4.00	3.50
1616FPS-1R5N-01	1.5	100 @ 1 V	30	35.1	3.50	3.10
1616FPS-2R2M-01	2.2	100 @ 1 V	20	44.4	3.00	2.90
1616FPS-2R7M-01	2.7	100 @ 1 V	20	52.0	2.40	2.30
1616FPS-3R3M-01	3.3	100 @ 1 V	20	66.0	2.30	2.20
1616FPS-4R7M-01	4.7	100 @ 1 V	20	84.0	2.00	1.90
1616FPS-6R8M-01	6.8	100 @ 1 V	20	118	1.60	1.50
1616FPS-100M-01	10	100 @ 1 V	20	180	1.40	1.30
1616FPS-150M-01	15	100 @ 1 V	20	264	1.10	1.00
1616FPS-220M-01	22	100 @ 1 V	20	348	0.95	0.90
1616FPS-330M-01	33	100 @ 1 V	20	552	0.75	0.70
1616FPS-470M-01	47	100 @ 1 V	20	780	0.62	0.60
1616FPS-680M-01	68	100 @ 1 V	20	1128	0.50	0.50
1616FPS-101M-01	100	100 @ 1 V	20	1596	0.45	0.42
1616FPS-151M-01	150	100 @ 1 V	20	2400	0.35	0.32
1616FPS-221M-01	220	100 @ 1 V	20	3552	0.30	0.28

Core Material: Ferrite

Revision date: 11 Mar 2022

SPQ: Taped / Reel 3000 [-01]