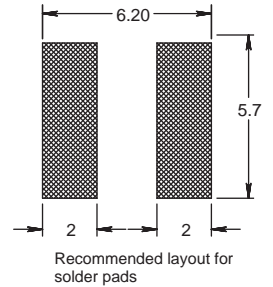
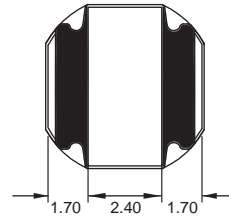
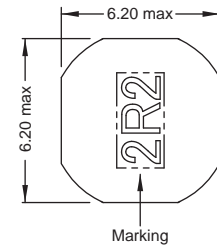
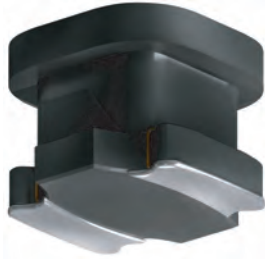


242418 FPS



Semi-shielded

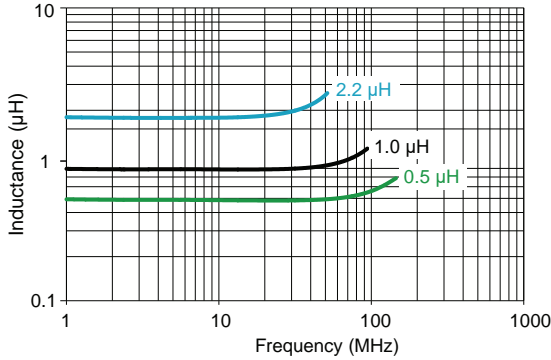
Engineer's Kit: EK-242418FPS-X



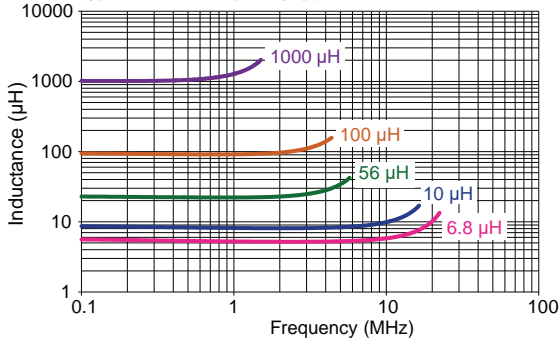
L (μH)	H max
0.5 - 6.8	4.65
8.2 - 3300	4.50

Chip Inductors for Power Applications

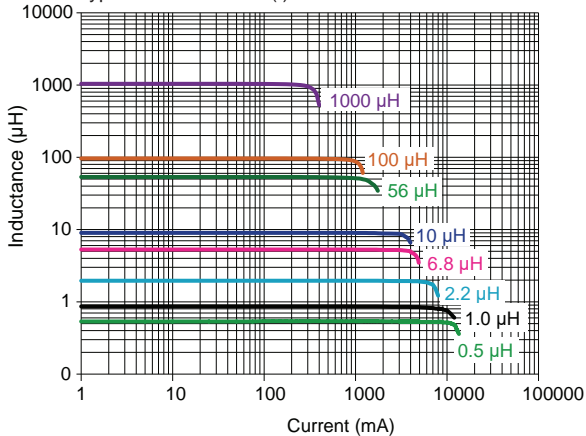
Typical Ls vs Frequency (f)



Typical Ls vs Frequency (f)



Typical Ls vs Current (I)



Part No	Inductance		f _L (kHz)	Tol ± (%)	DCR max (mΩ)	Rated DC Current	
	L (μH)					I _{sat} (A)	I _{rms} (A)
242418FPS-R50N-01	0.5		100 @ 1V	30	12	10.5	7.1
242418FPS-1R0N-01	1.0		100 @ 1V	30	13	8.60	6.5
242418FPS-1R3N-01	1.3		100 @ 1V	30	14	8.00	6.0
242418FPS-1R8N-01	1.8		100 @ 1V	30	16	7.00	5.3
242418FPS-2R2N-01	2.2		100 @ 1V	30	17	6.10	5.0
242418FPS-3R0N-01	3.0		100 @ 1V	30	22	5.00	4.8
242418FPS-3R3N-01	3.3		100 @ 1V	30	22	4.50	4.5
242418FPS-4R5N-01	4.5		100 @ 1V	30	30	4.30	3.8
242418FPS-4R7N-01	4.7		100 @ 1V	30	30	4.00	3.7
242418FPS-5R6N-01	5.6		100 @ 1V	30	34	3.80	3.6
242418FPS-6R3N-01	6.3		100 @ 1V	30	39	3.80	3.6
242418FPS-6R8N-01	6.8		100 @ 1V	30	44	3.60	3.5
* 242418FPS-8R2N-01	8.2		100 @ 1V	30	53.3	3.20	3.1
* 242418FPS-100M-01	10		100 @ 1V	20	54	3.10	3.0
* 242418FPS-150M-01	15		100 @ 1V	20	96	2.30	2.3
* 242418FPS-220M-01	22		100 @ 1V	20	134	1.90	1.9
* 242418FPS-330M-01	33		100 @ 1V	20	204	1.50	1.5
* 242418FPS-470M-01	47		100 @ 1V	20	252	1.30	1.3
* 242418FPS-560M-01	56		100 @ 1V	20	324	1.20	1.2
* 242418FPS-680M-01	68		100 @ 1V	20	390	1.00	1.0
* 242418FPS-101M-01	100		100 @ 1V	20	552	0.90	0.9
* 242418FPS-121M-01	120		100 @ 1V	20	600	0.85	1.0
* 242418FPS-151M-01	150		100 @ 1V	20	810	0.85	1.0
* 242418FPS-221M-01	220		100 @ 1V	20	1104	0.55	0.50
* 242418FPS-331M-01	330		100 @ 1V	20	1700	0.55	0.50
* 242418FPS-471M-01	470		100 @ 1V	20	2050	0.50	0.50
* 242418FPS-681M-01	680		100 @ 1V	20	3185	0.40	0.40
* 242418FPS-821M-01	820		100 @ 1V	20	3565	0.35	0.35
* 242418FPS-102M-01	1000		100 @ 1V	20	6218	0.25	0.25
* 242418FPS-332M-01	3300		100 @ 1V	20	20000	0.15	0.14

Core Material: Ferrite

Revision date: 22 Sept 2025

SPQ: Taped / Reel 1000 [-01]

Remarks:

* : The total length and width of component including epoxy is 6.8mm max.