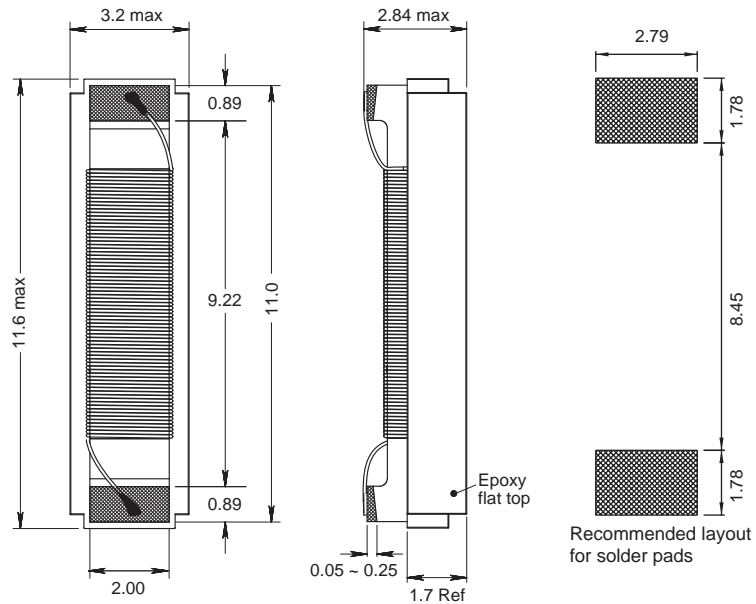
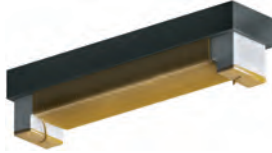


4408 AF

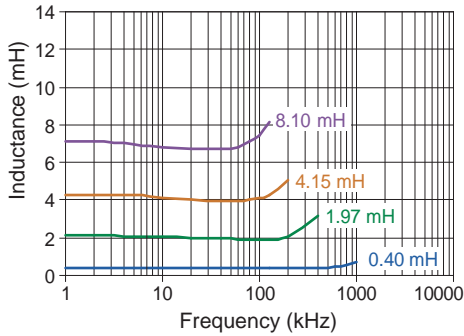


Transponder Coil

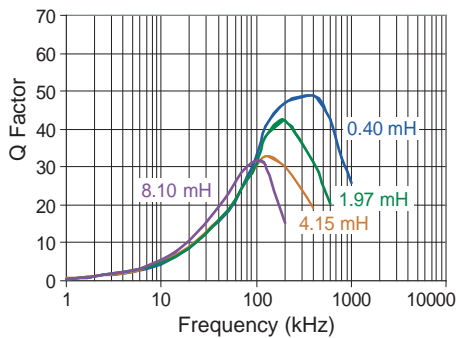
Engineer's Kit: EK-4408AF-X



Typical L_s vs Frequency (f)



Typical Q vs Frequency (f)



Part No	Inductance	f_L	Tol	Q	f_Q	SRF	DCR	Sensitivity
	L (mH)	(kHz)	± (%)	min	(kHz)	ref (kHz)	max (Ω)	(mV/μT)
4408AF-191K-YY	0.19	125	10	40	125	1700	2.5	6
4408AF-371K-YY	0.37	125	10	27	125	1200	6.4	9
4408AF-401K-YY	0.40	125	10	27	125	1100	6.8	9
4408AF-421K-YY	0.42	125	10	27	125	1100	8.1	9
4408AF-511K-YY	0.51	125	10	27	125	1000	8.5	11
4408AF-701K-YY	0.70	125	10	30	125	821	12	15
4408AF-901K-YY	0.90	125	10	28	125	760	13.9	19
4408AF-102K-YY	1.00	125	10	28	125	710	15	19
4408AF-112K-YY	1.08	125	10	31	125	710	15	19
4408AF-122K-YY	1.20	125	10	30	125	710	18	24
4408AF-132K-YY	1.34	125	10	30	125	700	20	25
4408AF-202K-YY	1.97	125	10	30	125	630	29.7	32
4408AF-242K-YY	2.38	125	10	32	125	560	30.8	40
4408AF-272K-YY	2.66	125	10	35	125	530	35.2	40
4408AF-292K-YY	2.89	125	10	35	125	530	35.2	41
4408AF-332K-YY	3.30	125	10	35	125	450	48	46
4408AF-342K-YY	3.45	125	10	29	125	430	60	48
4408AF-412K-YY	4.15	125	10	29	125	400	70	57
4408AF-472K-YY	4.70	125	10	29	125	380	70	63
4408AF-482K-YY	4.80	125	10	29	125	380	80	64
4408AF-492K-YY	4.90	125	10	29	125	380	80	66
4408AF-562K-YY	5.60	125	10	28	125	350	80	75
4408AF-682K-YY	6.80	125	10	28	125	345	95	98
4408AF-702K-YY	7.00	125	10	30	125	340	100	99
4408AF-712K-YY	7.10	125	10	30	125	340	100	100
4408AF-722K-YY	7.20	125	10	30	125	335	86.4	104
4408AF-812K-YY	8.10	125	10	28	125	310	125	119
4408AF-902K-YY	9.00	125	10	28	125	310	111.6	141
4408AF-952K-YY	9.50	125	10	28	125	310	111.6	172
4408AF-103K-YY	10.0	125	10	30	125	310	111.6	175
4408AF-133K-YY	13.5	125	10	30	125	200	130	246
4408AF-163K-YY	16.2	125	10	30	125	200	175	364

Core Material: Ceramic & Ferrite

Revision date: 29 Nov 2023

SPQ: Taped / Reel 1000 [-08]
3000 [-04]

Remarks: - Unlisted inductance values available upon request.
- 2% and 5% tolerance available upon request.